



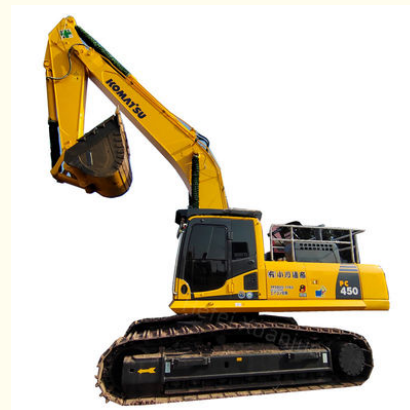
Used Komatsu Crawler Excavator PC450-8 In 2020 With 7790 Max Digging Depth

Our Product Introduction

more products please visit us on used-excavatormachine.com

Basic Information

- Place of Origin: Japan
- Brand Name: Komatsu
- Model Number: PC450-8
- Minimum Order Quantity: 1set
- Price: 44000-65000 USD
- Packaging Details: Container,Bulk
- Payment Terms: L/C, D/A, D/P, T/T, Western Union, MoneyGram
- Supply Ability: About 4 units are supplied every month



Product Specification

- Max Digging Depth: 7790
- Capacity: 2.1m³
- Max Digging Hight: 10925
- Product Model: Crawler Excavator
- Working Weight: 45125kg
- Model: PC450-8
- Rated Power: 257/1900
- Engine Model: SAA6D125E-5
- Highlight: **Komatsu Crawler Construction Excavator, PC450-8 Used Komatsu Excavator, Komatsu Second Hand Crawler Excavator**



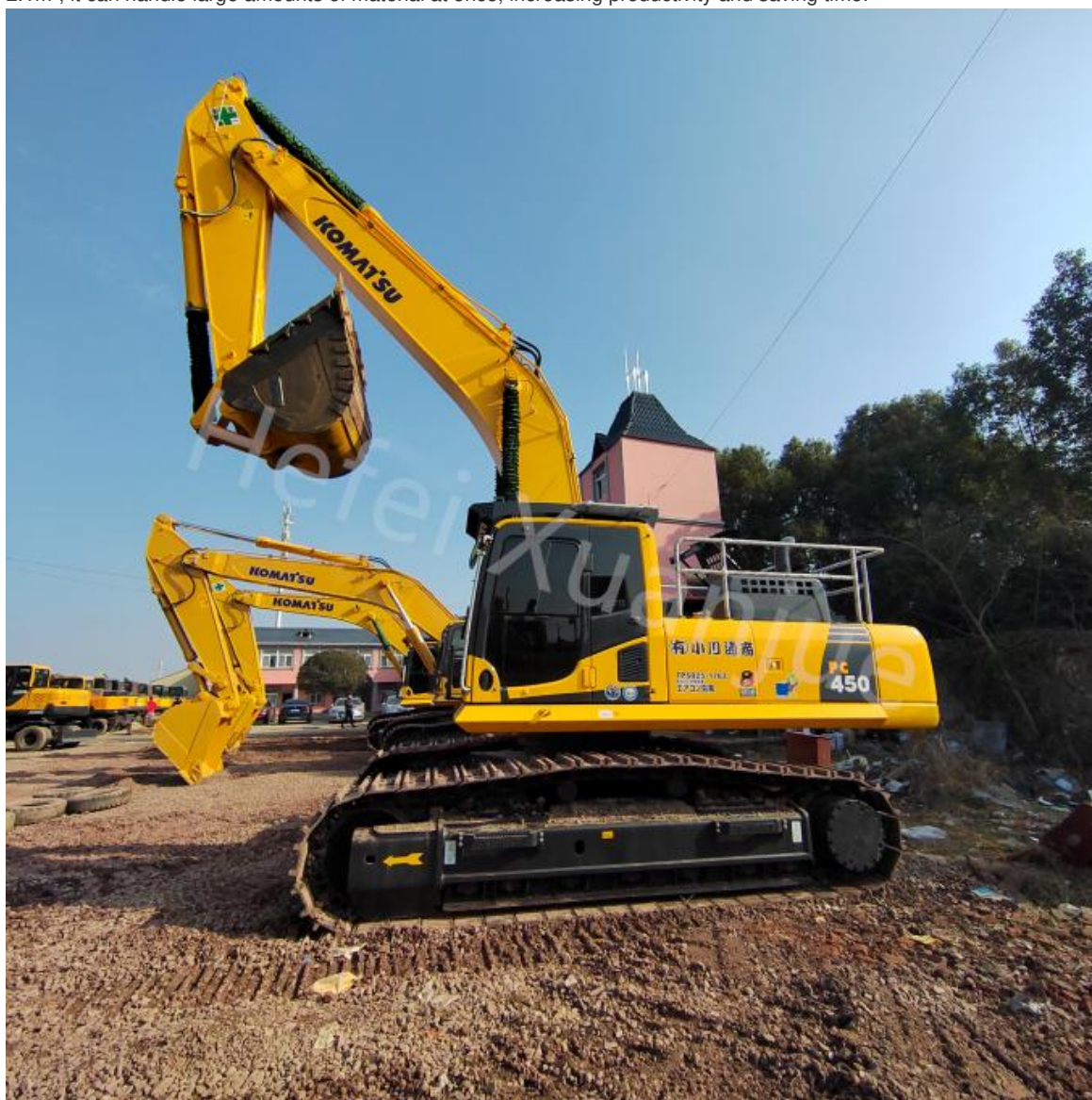
PC450-8 In 2020 With 7790 Max Digging Depth Used Komatsu Crawler Excavator

Product Description:

The Komatsu Construction Excavator is a powerful and versatile piece of equipment that is essential for any construction project. With its advanced technology and innovative design, it is capable of handling a variety of tasks with ease. The Komatsu Hydraulic Excavator is one of the most popular models in the market, known for its high performance and reliability. The Komatsu Heavy Equipment Excavator, specifically the Used Komatsu Excavator, is a cost-effective option for those looking for a reliable and efficient machine.

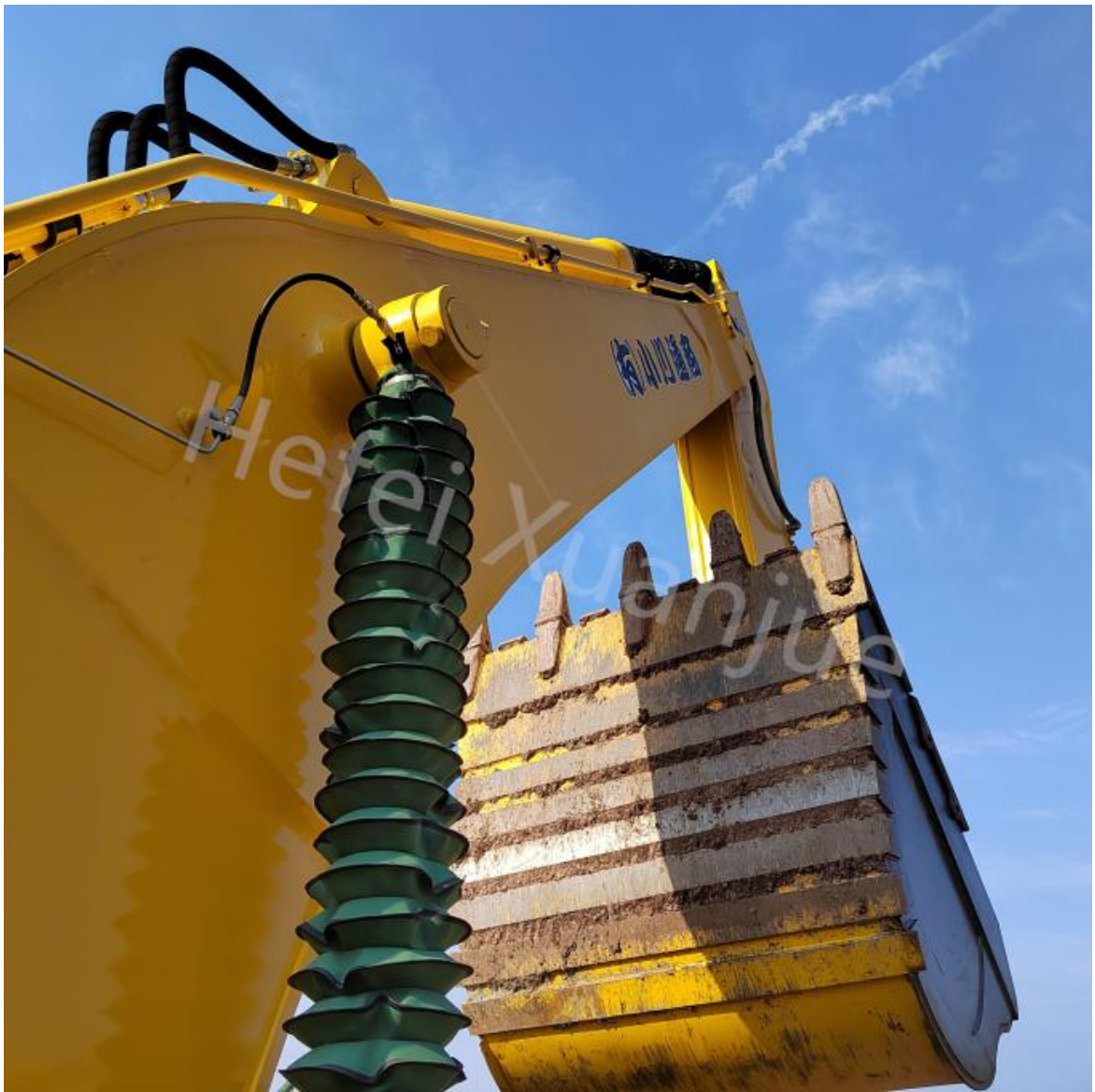
The Used Komatsu Excavator Model: PC450-8 is a top-of-the-line machine that is built to last. With a working weight of 45125kg, it is a heavy-duty machine that can handle even the toughest of jobs. Its powerful engine, the SAA6D125E-5, provides the necessary strength and speed to get the job done efficiently. The engine is designed to meet emission standards and reduce fuel consumption, making it an environmentally friendly option.

One of the key features of the Used Komatsu Excavator is its impressive digging depth of 7790mm. This makes it suitable for a wide range of applications, from digging foundations to trenching and earthmoving. With a capacity of 2.1m³, it can handle large amounts of material at once, increasing productivity and saving time.









Technical Parameters:

Product Model	Crawler Excavator
Max Digging Hight	10925
Working Weight	45125kg
Rated Power	257/1900
Overall Size	12040×3580×3660mm
Engine Model	SAA6D125E-5
Max Digging Depth	7790
Model	PC450-8
Travel Speed	3.0/4.2/5.5
Capacity	2.1m³

Applications:

The Used Komatsu Excavator is a high-quality, reliable and powerful machine designed for heavy duty work. It is manufactured by Komatsu, a renowned brand in the construction industry known for its durable and efficient construction equipment. This excavator is specifically designed for digging, loading, and other heavy-duty tasks, making it an ideal choice for construction sites, mining operations, and other similar applications.

Komatsu is a well-known brand in the construction industry, known for its high-quality and reliable machinery. The company has been in the business for decades and has established a strong reputation for producing durable and efficient construction equipment.

The Komatsu PC450-8 is the model number of this excavator, indicating that it belongs to the PC series of Komatsu Hydraulic Excavators. This series is known for its powerful engines, excellent performance, and durability, making it a

popular choice among construction companies.

The Used Komatsu Excavator is a highly versatile and efficient machine that is perfect for heavy duty work. Its durable build, powerful engine, and advanced features make it a popular choice among construction companies looking for a reliable and high-performing excavator. With its impressive specifications and Japanese manufacturing, this excavator is a valuable addition to any construction site.

Packing and Shipping:

Packaging

Each used Komatsu excavator is carefully inspected and cleaned before being packaged for shipping. We use high-quality packaging materials to ensure that the excavator is protected during transportation.

The excavator is first wrapped in a layer of protective plastic to prevent any scratches or damage during handling. It is then placed in a sturdy wooden crate, which is sealed to protect the excavator from dust, water, and other external elements.

In addition, we also include all necessary manuals and documents related to the excavator in the packaging for our customers' convenience.

Shipping

We have partnered with reliable and experienced shipping companies to ensure that our used Komatsu excavators are delivered to our customers in a timely and safe manner. Depending on the destination, we offer both sea and air freight options.

For international shipments, we take care of all necessary customs documentation and procedures to ensure a smooth delivery process. Our team also tracks the shipment closely and provides regular updates to our customers.

Upon arrival at the destination, our excavators are unloaded with specialized equipment and delivered to the designated location as per our customer's request.

With our careful packaging and reliable shipping methods, you can trust that your used Komatsu excavator will arrive in excellent condition and ready for use.

F & Q:

Xuanjue Serve For You, Best Quality And Lowest Price

Q1. What payment method?

Payment is negotiable

Q2. Will our company provide any service to the machine?

Yes! Before we deliver the machine, we will test, check, service, maintenance and clean it the machine.

Q3. What's the MOQ ?

MOQ is 1set. FOB or others can be negotiated.

Q4. What's the payment terms?

FOB or others can be negotiated.

Q5. Who pays the freight?

This is determined based on the payment method. We can either find a freight forwarder or the customer can designate a freight forwarder.

If you have any questions, you can call and send an email at any time and leave a message. We will answer you as soon as possible after seeing it.



Hefei Xuanjue Construction Machinery Co., Ltd.



13385604601



used-excavatormachine.com

Sanshitou, Xinzhan District, Feidong County, Hefei City, Anhui Province, China