



## Versatile Used Komatsu Construction Excavator In With 172kN Bucket Digging Force

Our Product Introduction

more products please visit us on [used-excavatormachine.com](http://used-excavatormachine.com)

### Basic Information

- Place of Origin: Japan
- Brand Name: Used Komatsu Excavator
- Model Number: 220
- Minimum Order Quantity: 1 set
- Price: Negotiable
- Packaging Details: Container or Bulk
- Delivery Time: 5-8 work days
- Payment Terms: L/C, D/A, D/P, T/T, Western Union, MoneyGram
- Supply Ability: 100 units per year



### Product Specification

- Engine: SAA6D107E-1
- Model: PC220-8
- Fuel Tank Capacity: 400L
- Power: 110/2000
- Gradeability: 70/35
- Bucket Digging Force: 172kN
- Location: China
- Maximum Excavation Depth: 6920mm
- Highlight: Construction Second Hand Komatsu Excavator, Used Komatsu Construction Excavator, Versatile Used Komatsu Crawler Excavator



### Product Description

Our Product Intro

#### Versatile Komatsu Construction Excavator in with 172kN Bucket Digging Force

##### Product Description:

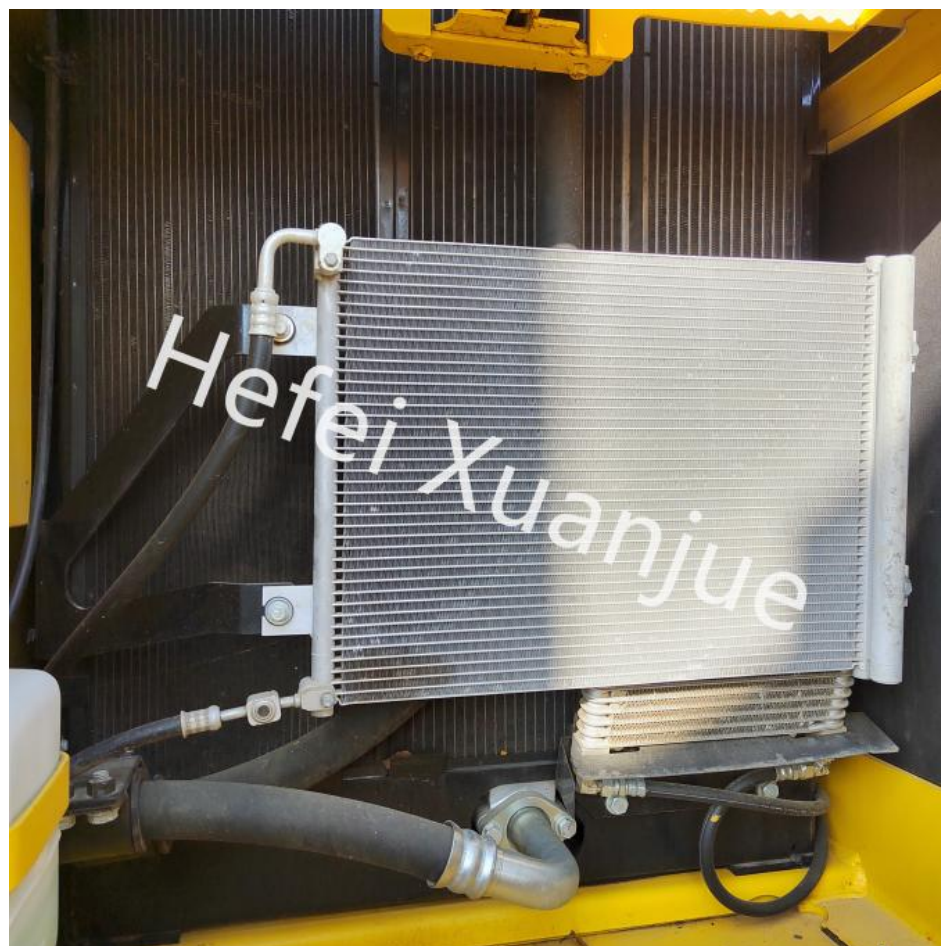
Komatsu Heavy Equipment Excavator is a powerful and reliable construction excavator for earth moving. Boasting a 110/2000 power, 5.5/4.2/3.1Km/h travel speed, 70/35 gradeability, and powerful SAA6D107E-1 engine, this Komatsu excavator is perfect for any job site. Located in China, this Komatsu construction excavator is designed to help get your job done efficiently and quickly. It is perfect for any job involving earth moving, such as construction, mining, excavating, and more. With its powerful engine and robust design, the Komatsu excavator will ensure your work is done in the most efficient manner. Invest in this Komatsu earth moving excavator and you will not be

disappointed.

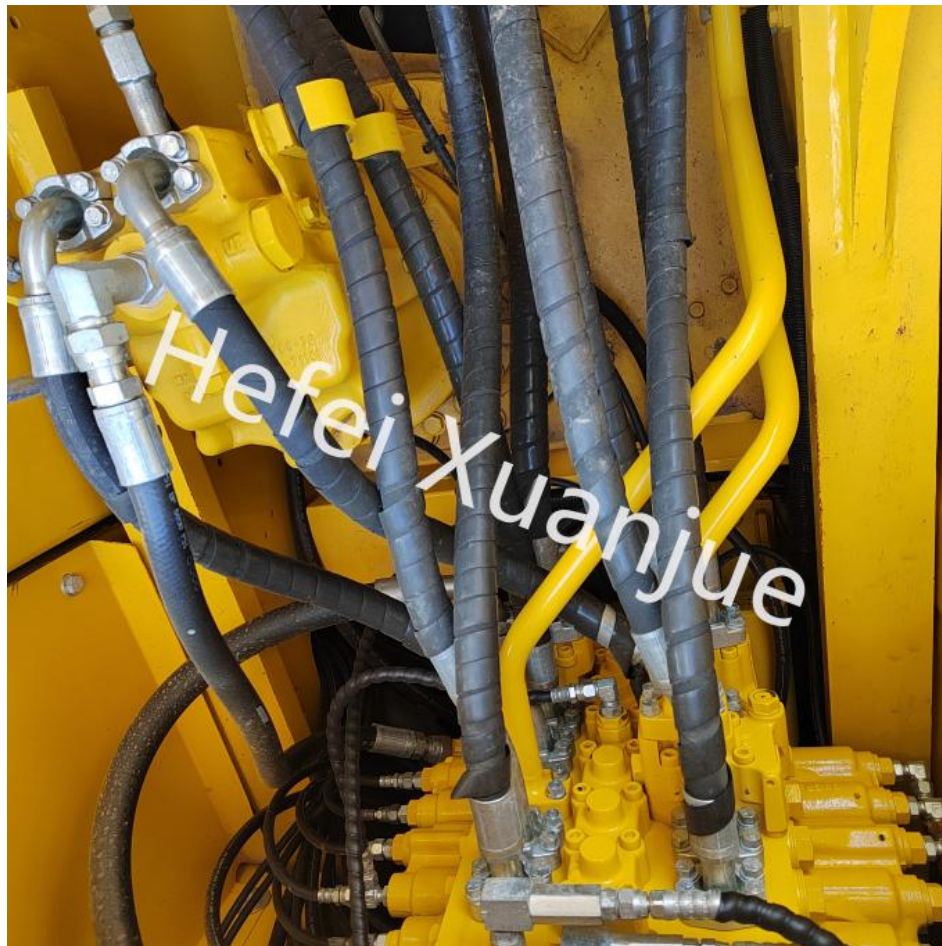
Technical Parameters:

Parameter		Value
Model	PC220-8	
Location	China	
Engine	SAA6D107E-1	
Power	110/2000	
Bucket Capacity	1m³	
Bucket Digging Force	172kN	
Fuel Tank Capacity	400L	
Travel Speed	5.5/4.2/3.1Km/h	
Gradeability	70/35	
Total Weight	23000kg	
Maximum Excavation Depth	6920mm	









### Features:

Product Name: Used Komatsu Excavator  
 Power: 110/2000  
 Bucket Capacity: 1m<sup>3</sup>  
 Location: China  
 Bucket Digging Force: 172kN  
 Fuel Tank Capacity: 400L  
 Komatsu Digging Excavator

### Applications:

The Used Komatsu Excavator—model 220, of Japanese origin—is a heavy-duty construction and earth moving excavator, providing reliable service in a variety of demanding applications. With a bucket digging force of up to 172 kN, this Komatsu excavator can reach depths of up to 6,920 mm while travelling at speeds of 5.5, 4.2, and 3.1 km/h. Its capacity to carry up to 1 m<sup>3</sup> of soil makes this Komatsu excavator an ideal choice for a wide range of construction and earth moving applications.

Whether you need a Komatsu Construction Excavator for your construction project or a Komatsu Earth Moving Excavator 220 for your earthmoving needs, our range of Used Komatsu Excavators has the perfect model for you. We provide a comprehensive range of models, suitable for a variety of applications, with a range of features and benefits. Each model is designed to provide maximum efficiency, productivity and reliability.

### F & Q:

Xuanjue Serve For You, Best Quality And Lowest Price

**Q1.** What payment method?

Payment is negotiable

**Q2.** Will our company provide any service to the machine?

Yes! Before we deliver the machine, we will test, check, service, maintenance and clean it the machine.

**Q3.** What's the MOQ ?

MOQ is 1set.

**Q4.** What's the payment terms?

FOB or others can be negotiated.

**Q5.** Who pays the freight?

This is determined based on the payment method. We can either find a freight forwarder or the customer can designate a freight forwarder.

If you have any questions, you can call and send an email at any time and leave a message. We will answer you as soon as possible after seeing it.



**Hefei Xuanjue Construction Machinery Co., Ltd.**



13385604601



[used-excavatormachine.com](http://used-excavatormachine.com)

Sanshitou,Xinzhan District,Feidong County,Hefei City,Anhui Province,China